



# First Presbyterian Day School

## WELCOME

Preschool is an important part of a child's life! They grow very quickly as they learn new concepts like problem-solving, reasoning, thinking, and creating. Thank you for considering First Presbyterian Day School to care for and teach your child in a Christian environment that nurtures their individual spirit. Our purpose is to help children with these skills in a safe, loving atmosphere that celebrates their mental, social, physical, and spiritual growth at all levels.

During the 2024-2025 school year, First Presbyterian Day School will offer morning classes for:

- Toddlers (1 year old) meet T/TH (2 days)
- 2 year old class meets M/W/F (3 days)
- 3 year old class meets M-F (5 days)
- 4 year old PreK meets M-F (5 days)

To be eligible for a specific class, your child must be that age on or before August 31.



## EXTRA LEARNING

At First Presbyterian Day School, our students have many special learning opportunities outside of their normal classroom lessons.

- Weekly Praise Time (3 & 4 year old classes)
- Music class (at noon, extra fee)
- Library Time in our Children's Library
- Library Time at the Rowan Public Library
- Storytelling with Special Friends
- Spanish Lessons
- Sign Language Lessons
- Sensory Room and Indoor Climbing Room





Read below for extra information about each of our classrooms. Our students learn with engaging lessons, a loving teaching staff, and GREAT FUN!

## TODDLERS

### Our Toddlers:

- Must be 1 by August 31
- Class meets from 8:30am-11:45am on Tuesdays and Thursdays (6 hrs/week)
- Class size is 6-8 students
- Skill development includes:
  - Gross Motor (walking, running, climbing)
  - Fine Motor (self-feeding, drawing, finger play)
  - Sensory (seeing, hearing, tasting, touching, and smelling)
  - Communication and Language Skills (using their body and words to communicate, using words and then phrases/sentences)
  - Social Skills (playing with others, taking turns, imaginative play, sharing, developing manners)
  - Literacy (listening to and engaging with books, pointing to objects in books, simple songs and nursery rhymes )
  - Social Growth Skills (improved separation anxiety, increased focus, better control of emotions and reactions)

*Tuition Costs: \$165.00/month (approx \$6.25/hr).*







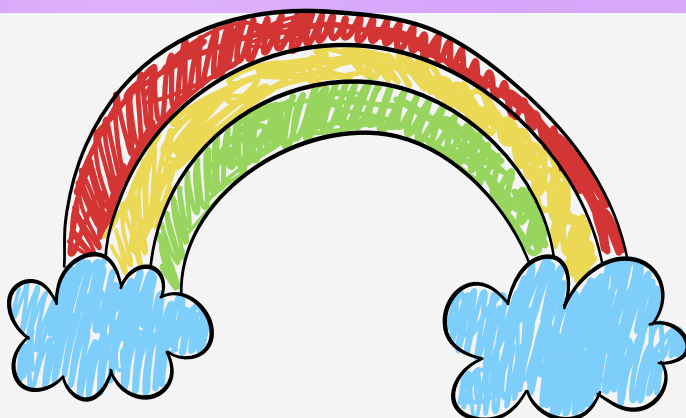
# TWO YEAR OLDS



Our 2 year olds:

- Must be 2 by August 31
- Class meets from 8:30am-11:45am, Monday, Wednesday and Friday (9.75 hours/week)
- Class size 10-12 students
- Skill Development includes:
  - Gross Motor (running, jumping, kicking, climbing, eye-hand coordination, spatial awareness)
  - Fine Motor (coloring, drawing, making straight lines and circles, small manipulative, finger play, puzzles)
  - Sensory (seeing, hearing, tasting, touching, and smelling)
  - Communication and Language Skills (making 2-3 word phrases, short sentences and questions, general conversation, repeating nursery rhymes)
  - Social Skills (independence, sharing, taking turns, using manners, being kind, imaginative play with a friend, understanding when making mistakes)
  - Reading Literacy (reading books from front to back and right side up, listening to a story, answering simple questions about the book, reciting the ABCs, recognizing their names)
  - Math Literacy (recognizing and counting 1-10, recognizing/naming basic shapes, recognizing/naming basic colors)

*Tuition costs: \$225.00/month (approx \$5.51/hr).*







# THREE YEAR OLDS



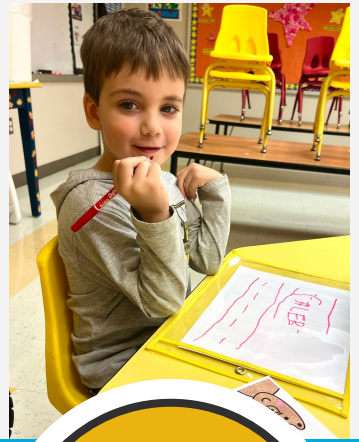
## Our 3 year olds:

- Must be 3 by August 31
- Class meets from 8:30am -12noon, Monday thru Friday (17.5 hours/week)
- Class size 12-16 students
- Skill Development includes:
  - Gross Motor (running, jumping, climbing, dancing, spatial awareness, eye-hand coordination)
  - Fine Motor (coloring, drawing basic shapes, finger play, puzzles, writing first name)
  - Sensory (seeing, hearing, tasting, touching, and smelling)
  - Communication and Language Skills (general conversation, using sentences to make requests, repeating nursery rhymes, singing songs)
  - Social Skills (independence, sharing, taking turns, using manners, being kind, imaginative play with a friend, understanding when making mistakes, building friendships/relationships with peers, being a helper, respecting others)
  - Reading Literacy (listening to a book and answering simple questions, recognizing the ABCs, matching upper/lower case letters, writing their name, recognizing friends' names, rhyming words, opposites, names the days of the week/months/seasons)
  - Math Literacy (recognizing/counting 1-25, matching shapes, matching/sorting/comparing/patterns)

*Tuition Costs: \$300.00/month (approx \$4.29/hr).*







# FOUR YEAR OLDS

Our 4 year olds:

- Must be 4 by August 31
- Class meets from 8:30am -12noon, Monday thru Friday (17.5 hours/week)
- Class size is 12-16 students.
- Skill Development includes:
  - Gross Motor (running, jumping, climbing, dancing, hopping, spatial awareness, eye-hand coordination)
  - Fine Motor (coloring, drawing basic shapes, finger play, puzzles, writing ABC, writing first and last name)
  - Sensory (seeing, hearing, tasting, touching, and smelling)
  - Communication and Language Skills (general conversation, using sentences to make requests and give details, repeating nursery rhymes, singing songs)
  - Social Skills (independence, sharing, using manners, being kind, imaginative play with a friend, understanding when making mistakes, building relationships with peers, being a helper, respecting others, empathy/compassion)
  - Reading Literacy (listening to a book and retelling the story, "reading" books independently, matching upper/lower case letters, rhyming words, opposites, basic sight words, color words, shape words, recognizing names the days of the week/months/seasons)
  - Math Literacy (recognizing/counting 1-50, sequencing, drawing shapes, sorting/comparing/patterns)

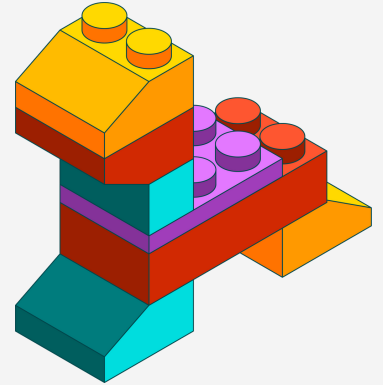
*Tuition Costs: \$300.00/month (approx \$4.29/hr).*







# ADDITIONAL INFORMATION



A non-refundable registration fee is due at the time of registration to ensure your child's place in a class. The registration fee is:

- \$100.00 for one child
- \$75.00 for each additional child

Tuition is paid monthly by automatic draft ONLY.

We invite all families interested in our program to schedule a personal visit (feel free to bring your little one too). You will find out why so many families love First Presbyterian Day School! For more information or to schedule a visit, contact the church at 704-636-5377 or email Christy Godbold at [dayschool@firstpressalisbury.org](mailto:dayschool@firstpressalisbury.org)

Thank you for considering First Pres Day School to serve you and your child with Christian love and in a fun, exciting, and stimulating environment. Please use the QR code to register online for 2024-2025.

